

ATTENTION!

CLOSURE OF THE MAIN ENTRANCE

(AT 8 ŚNIADECKICH STREET)

FROM JULY 14 TO SEPTEMBER 30

We would like to inform you that during the above period, renovation work will be carried out on the main staircase and entrance hall of the IMPAN building at 8 Śniadeckich Street. This work aims to implement necessary fire safety improvements. Please review the following information regarding changes to building access, introduced to ensure the safety of staff and visitors.

AREAS OUT OF USE

- The main entrance at Śniadeckich Street will be closed.
- The staircase next to the reception and the elevator will be out of service.

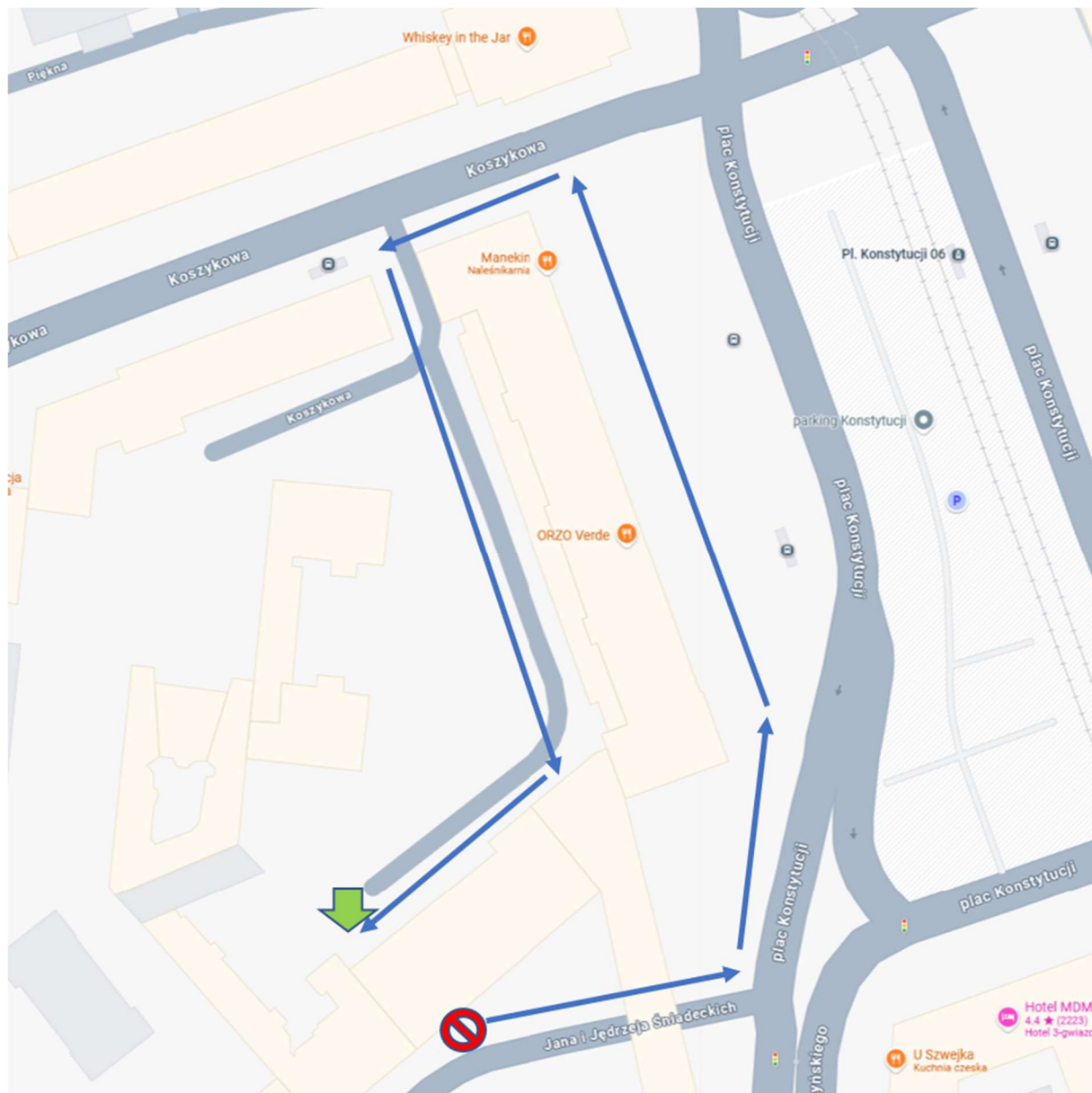
TEMPORARY ALTERNATIVE ARRANGEMENTS

- The rear entrance from 53 Koszykowa Street will be accessible.
- Reception relocated to the adjacent hall by conference room no. 6
- Movement between floors via the second staircase
- Elevator access is available to elderly and disabled persons upon prior request at reception.

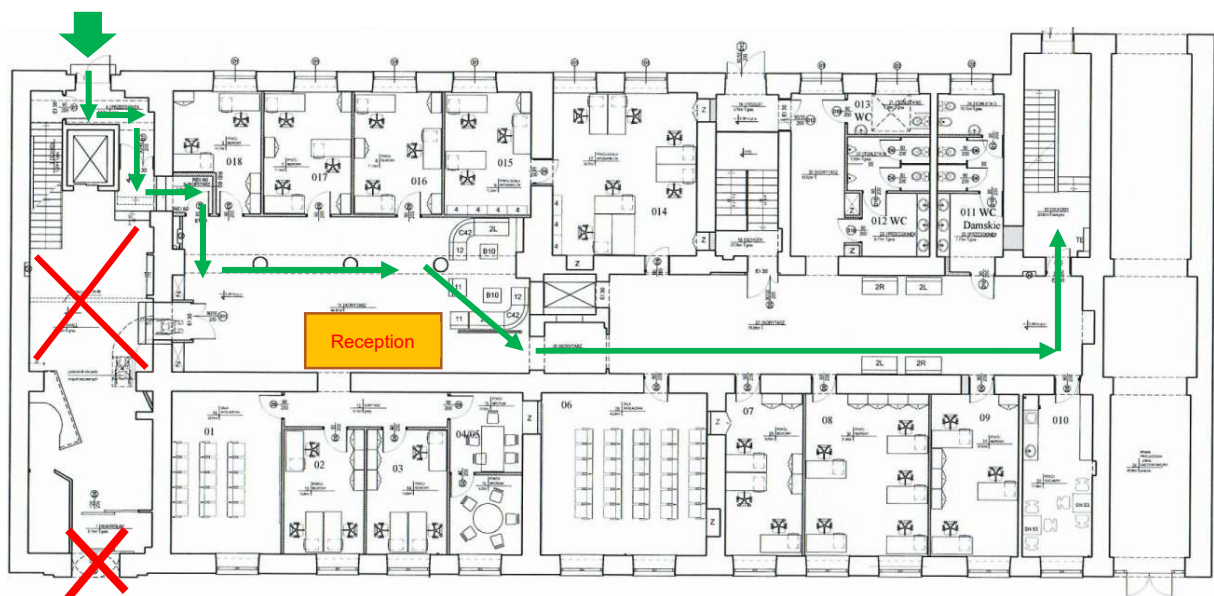
We apologize for the inconvenience caused by the renovation and appreciate your understanding. Please report any issues to the reception. Updates regarding the renovation will be posted at <https://www.impan.pl/en/institute/renovations-in-im-pan> and through posted notices.

Director of IMPAN

The way to the back entrance



Reception and the way to the other staircase



The main entrance is closed.

The back entrance is available from Koszykowa 53.

